

# Component Spotlight

## Department Now > Situation Report component

### About the component:

This component provides an up-to-date overview of the Emergency Department situation with forecasted activity. View an overview of the variation in today's presenting demand by hour vs expected patients currently in ED by area and diagnosis, PET breaches and patients waiting to be seen, for subspecialty reviews, and for admission. Drill to live pathway tracking of individual patients.

The situation report provides an overview, updated every 5 min of today's demand variation and patients in ED to prompt escalations at the earliest onset. Viewed next to PET analyses and patients waiting to be seen, for review or admission, this begins to detail the current patient flow in ED and for today. The live tracking of patient pathways and drills to current ED patient details support direct actions to improve flow. This is based on both the current activity and forecasted activity based on the average historical data values for the hour of day, the day of the week and whether it is winter or not.

**Who it's for:** Administration Officers, Clinical Nurse/Shift Coordinator, Clinical Specialists – Allied Health, Nursing and Medical, Bed Managers, Nurse Unit Managers – ED & Inpatients and Clinical Department Managers.

### Where you'll find it:

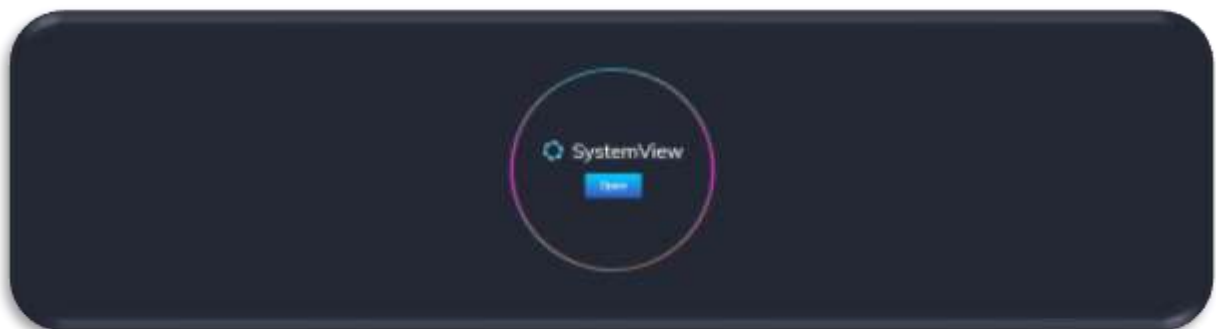
SystemView > Explore > Emergency Department > Department Now > Situation Report.

### Data refresh rates:

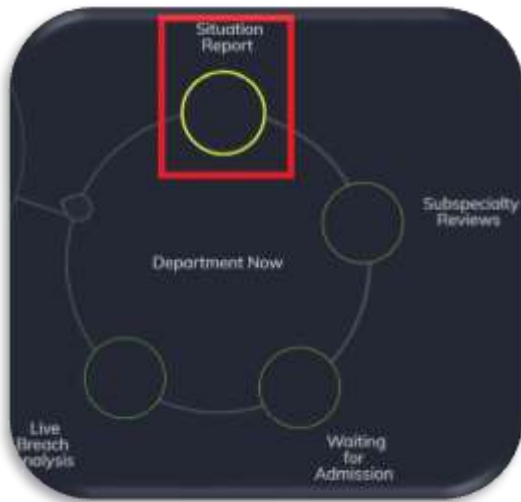
The data within this component updates every 5 minutes, 7 days a week.

### Step 1.

Sign in to SystemView using your current hospital credentials and password.



### Step 2.



**Navigate to** Explore > Emergency Department > Department Now > Situation Report.

### Step 3.



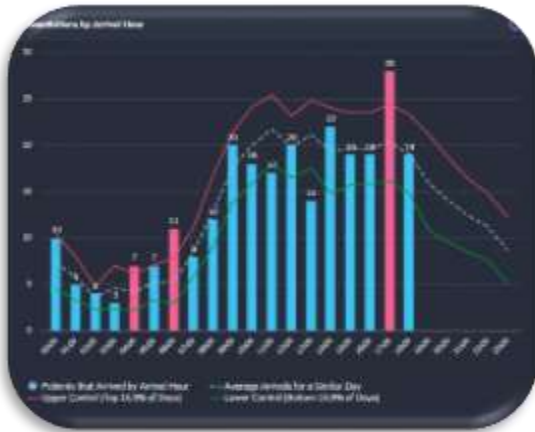
**Apply filters** at the top of the page to target your analysis.

**Patient List Details** – select the button located alongside the filters at the top of the component. Patient details includes an exportable table of current emergency department patients that updates every 5 minutes and once activated, can be saved and referenced in **Interact - MyLists**.

### Step 4.



**Summary tile** provides a quick overview of key figures for the situation report.



**Presentations by Arrival Hour** displays the number of presentations to the Emergency department across the day from midnight to midnight.

To accommodate the natural variance in presentations by hour to emergency the logic applies one (1) standard deviation either side of the mean. Therefore, presentations that line up within the red and green control limits is considered a normal hour.

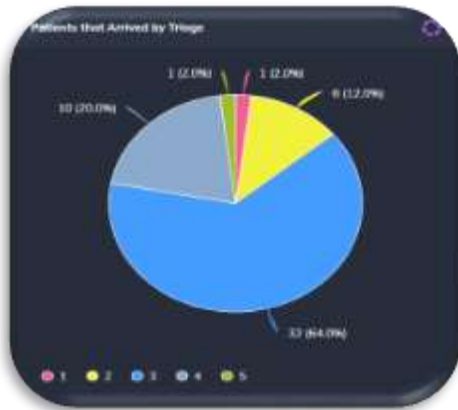
- Dotted Trend Line - Mean (average) presentations for that hour by (Hour of day, Day of week and, is or is not winter)
- Red Trend – Upper Control: One standard deviation above the mean average
- Green Trend – Lower Control: One standard deviation below the mean average
- Blue bars – patient arrival by arrival hour
- Pink bars – Describe a presenting hour where the number of arrivals to ED exceeded the expected value.



**Patients in ED by Pathway & Time** displays the distribution of patients within the Emergency department by pathway and time.

**Selecting a series from the legend will adjust the chart graphic.**

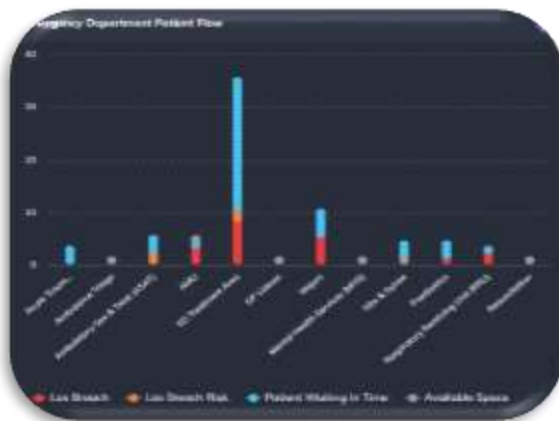
Each colour represents the number of patients, and the stage of the patient's episode of care that they are up to within Emergency (unique to each hospital).



**Patients that Arrived by Triage** chart displays the breakdown of emergency department presentations by Manchester Triage System (MST)

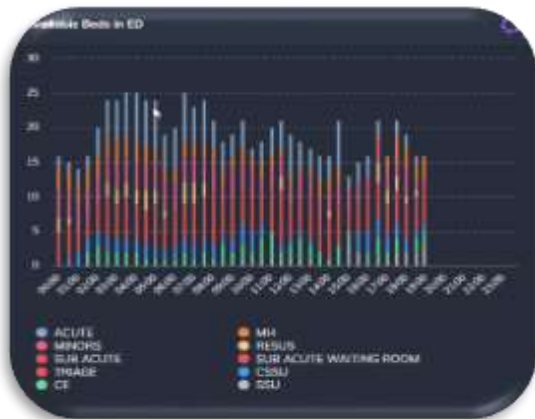
- category 1 (Pink): To be seen Immediately
- category 2 (Yellow): To be seen within 10 minutes
- category 3 (Dark Blue): To be seen within 60 minutes
- category 4 (Light Blue): To be seen within 120 minutes
- category 5 (Green): To be seen within 240 minutes
- Non defined (Red): no category allocated

**Note: Irish Children's Triage System** ([National Emergency Medicine Programme, Irish Children's Triage System \(ICTS\) \(hse.ie\)](#))



**Emergency Department Patient Flow** chart provides a visual summary of each ED area. The bubbles represent whether a bed is taken, and the colour of the bubble represents if the patient is waiting in time or at risk of breaching.

- Grey – Available Space
- Blue – Bed is occupied, and patient is within ED Length of Stay (LoS)
- Orange – Bed is occupied, and patient is an ED LoS breach risk
- Red – Bed is occupied, and patient is an ED LoS breach



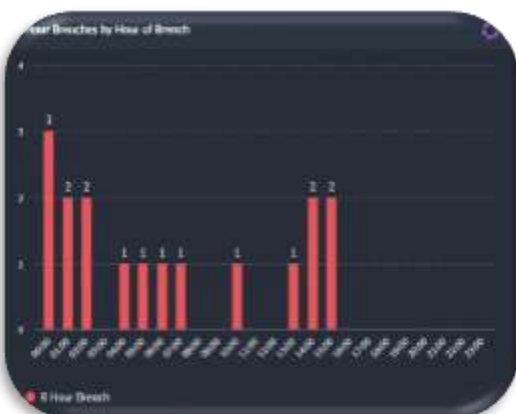
**Available Beds in ED** chart displays the number of available beds by hour in each area within the Emergency department.

Each individual colour in the bar represents an individual area of the department (unique to each hospital)

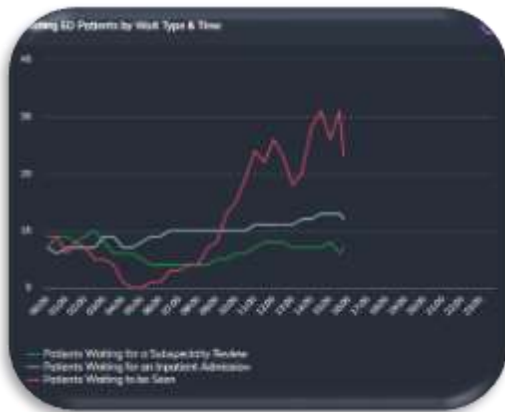
**Selecting a series (area) from the legend will adjust the chart graphic.**



**Summary of patient** tile provides a quick overview of key figures relating to patients waiting for subspecialty review and admitted to inpatients.

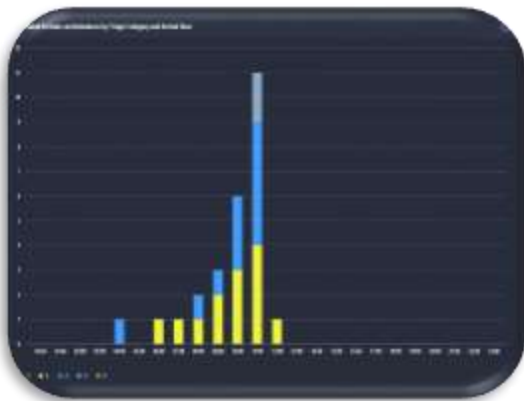


**6 Hour Breaches by Hour of Breach** displays the number of Emergency department 6-hour breaches by hour of day.



**Waiting ED Patients by Wait Type & Time** displays the current trend of patients awaiting the following actions to progress. The three sub-groups are:

- Green: Patients waiting for a Subspecialty Review
- Blue: Patients waiting for an Inpatient Admission
- Pink: Patients waiting to be Seen



**ED Patients Arrivals via Ambulance by Triage Category and Arrival Hour** displays the number of patients who have arrived by ambulance to the ED by arrival hour.

Each bar is colour coded to identify the Manchester Triage Score/Irish Children's Triage system:

- category 1 (Pink): To be seen Immediately
- category 2 (Yellow): To be seen within 10 minutes
- category 3 (Dark Blue): To be seen within 60 minutes
- category 4 (Light Blue): To be seen within 120 minutes
- category 5 (Green): To be seen within 240 minutes
- Non defined (Red): no category allocated