

# Component Spotlight

## Demand & Activity component

### About the component:

This component allows end users to view the number of medical imaging requests (demand) and medical imaging examinations performed (activity) for all patient types (outpatient, inpatient, and emergency).

This component is key to determining performance improvement strategies for each modality and whether achieving balance is achievable within the current resources.

This component can be used to set a modelled capacity for unscheduled demand allowing end users to visualise the impacts of modifying unscheduled capacity on a per day of the week basis.

This component provides average weekly demand calculations and compares to the average number of medical imaging exams per week to determine if a modality is in balance.

**Who it's for:** Radiologists, scheduling staff, operations managers, radiology department managers.

### Where you'll find it:

SystemView > Explore > Medical Imaging > Demand & Activity

### Data refresh rates:

The data within this component updates Daily.

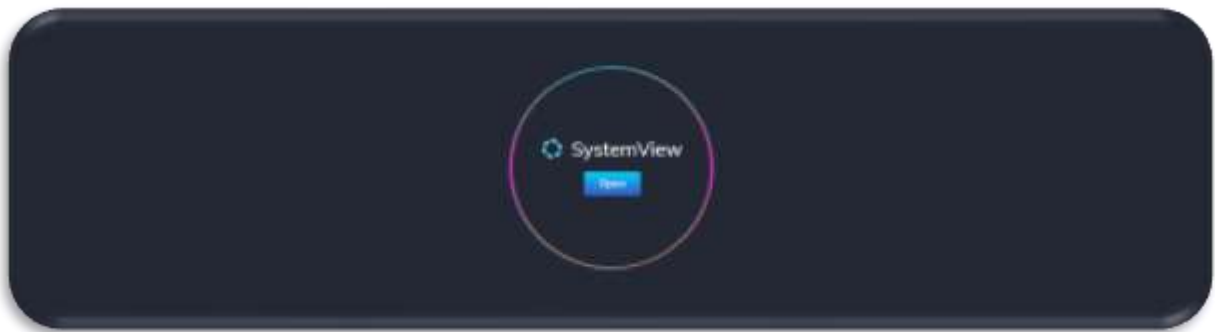
### Definitions used in Demand & Activity:

Title	Definition
<b>Total Demand</b>	Projected Scheduled demand + unscheduled demand
<b>Total Activity</b>	Scheduled activity + Unscheduled activity
<b>Total Balance</b>	Total Activity + Total Demand
<b>Scheduled activity</b>	Average scheduled (outpatient) requests per week (6 week forecast)
<b>Projected Scheduled Demand</b>	Average projected scheduled (outpatients) requests per week (6 week forecast)
<b>Removals other than treated (RoTT)</b>	Average RoTT per week (rolling 13 weeks)
<b>Scheduled Balance</b>	Scheduled activity +RoTT – Projected scheduled demand
<b>Unscheduled Demand</b>	Average unscheduled (emergency and inpatients) requests per week
<b>Unscheduled activity</b>	Average unscheduled (emergency and inpatient) exams per week (rolling 13 weeks)

<b>Unscheduled Balance</b>	Unscheduled activity – unscheduled demand
<b>Unscheduled modelled capacity</b>	Unscheduled modelled capacity is assumed to be the unscheduled demand with 1 standard deviation
<b>Unscheduled Balance (Model)</b>	Unscheduled activity – unscheduled modelled capacity

### Step 1.

Sign in to SystemView using your current hospital credentials and password

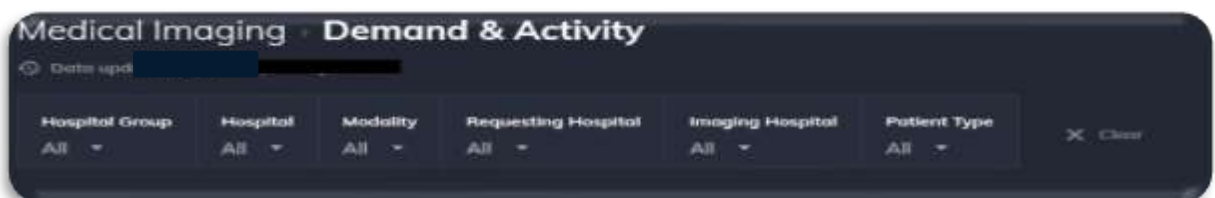


### Step 2.



**Navigate to** Explore > Medical Imaging > Demand & Activity

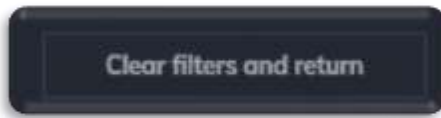
### Step 3.



**Apply drop-down filters** at the top of the page to refine the data.



**Scheduled and Unscheduled Demand Vs Average Activity for the next 6 weeks by Type** displays the scheduled and unscheduled demand vs the average activities for the next 6 weeks (rolling 13 weeks).

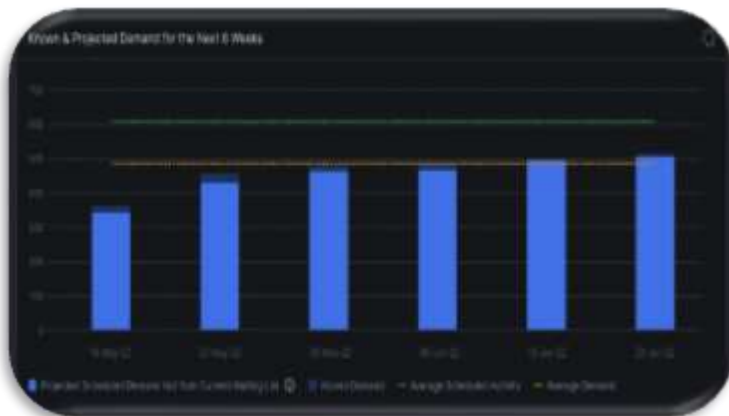


Select Clear filters and return to go back to **Demand vs Activity per Week by Modality and Hospital**

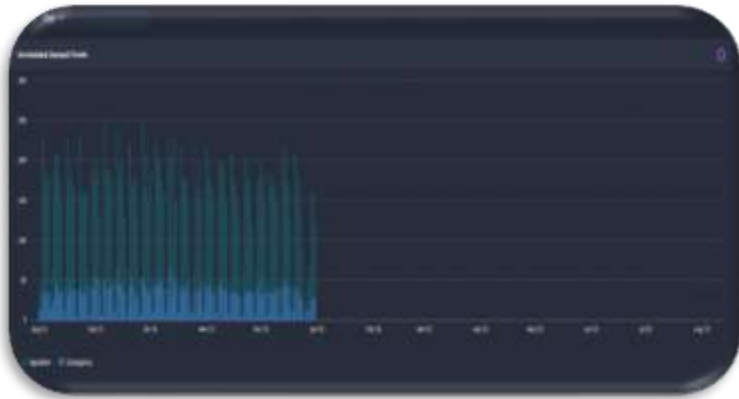


**Key Metrics: Medical Imaging Scheduled Bookings & Demand** displays a general overview of the selected modality's scheduled demand and activity.

The historical scheduled demand is also displayed as a point of comparison for the scheduled demand projections for the next six weeks.



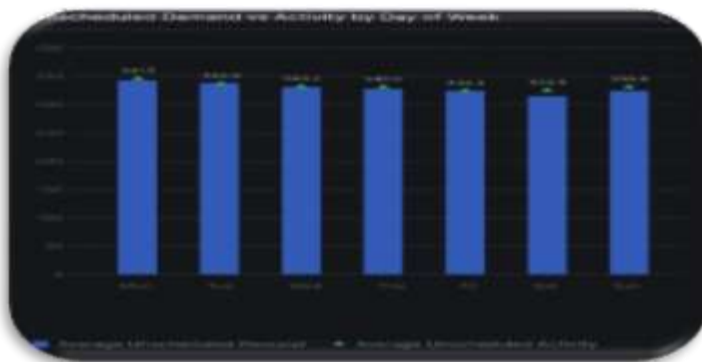
**Known & Projected Demand for the Next 6 Weeks** displays a chart of the selected modality's scheduled demand (both known and projections) for the next six weeks.



**Unscheduled Demand Trends** displays a chart of the selected modality's unscheduled demand trends grouped by patient type (Inpatient and Emergency).



This chart can be displayed by month, week, or day.



**Unscheduled Demand vs Activity by Day of Week** displays a chart of the selected modality's average unscheduled demand against the activity for each day of the week.



**Historical Unscheduled Demand by Completed on Request Date Status & Date** displays a chart of the selected modality's daily unscheduled demand for the last 3 months (pending

on time frame selected), highlighting the number of requests raised and completed on the same day vs those requests raised but completed on a subsequent day.

**By hovering over the bars in the chart you can get further detailed information from the specific day.**



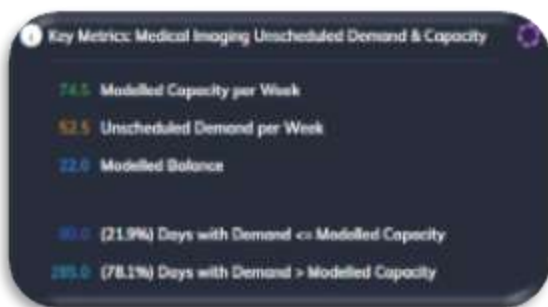
Adjust Modelled Capacity

Day of week	Avg Unscheduled Demand	Avg Unscheduled Activity	Avg Unscheduled Demand + 1SD	Modelled Capacity (User Input)
Monday	177.53	183.5	207.2	287.2
Tuesday	186.54	174.4	239	219
Wednesday	173.55	186.8	208.2	208.2
Thursday	171.85	182.7	207.2	207.2
Friday	188.46	154.2	188.4	188.4

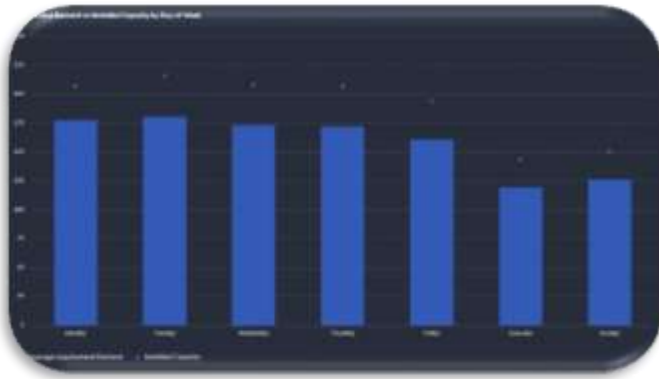
Cancel Show

**Adjust Modelled Capacity** displays the selected modality’s unscheduled demand and activity for each day of the week along with the unscheduled demand with 1 standard deviation.

**This table also allows users to input a modelled capacity value that interacts with the rest of the tiles in this section of the component (i.e., user inputs have an impact to how the rest of the charts in this section are displayed)**

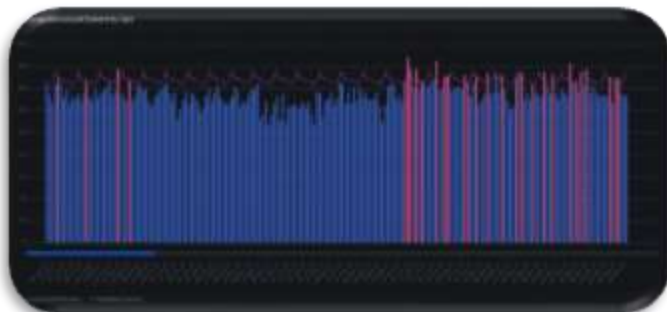


**Key Metrics: Medical Imaging Unscheduled Demand & Capacity** displays a general overview of the selected modality’s unscheduled demand as well as the modelled capacity (as per the user’s inputs). The variation is also displayed which counts the number of days when the demand was higher than the modelled capacity.



**Unscheduled Demand vs Modelled Capacity by Day of Week** displays a chart of the selected modality's unscheduled demand against the modelled capacity (user's input) for each day of the week.

By hovering over the bars in the chart you can get further detailed information from the specific day.



**Historical Unscheduled Demand by Date** displays a chart of the selected modality's daily unscheduled demand for the last year against the modelled capacity trend, highlighting (pink) those days when the unscheduled demand was greater than the modelled capacity (representing the variation).