

Component Spotlight

Live Inpatient View component (Sites using AGFA)

About the component:

This component allows end users to monitor the radiology requests made from the inpatient department, the time patients are waiting for radiology activity and the impact on the inpatient flow.

Who it's for: Radiologist, Pacs/RIS Managers, ED staff, Consultants, ward nurse, radiology manager.

Where you'll find it:

SystemView > Explore > Medical Imaging > Patient List > Live Inpatient View

Data refresh rates:

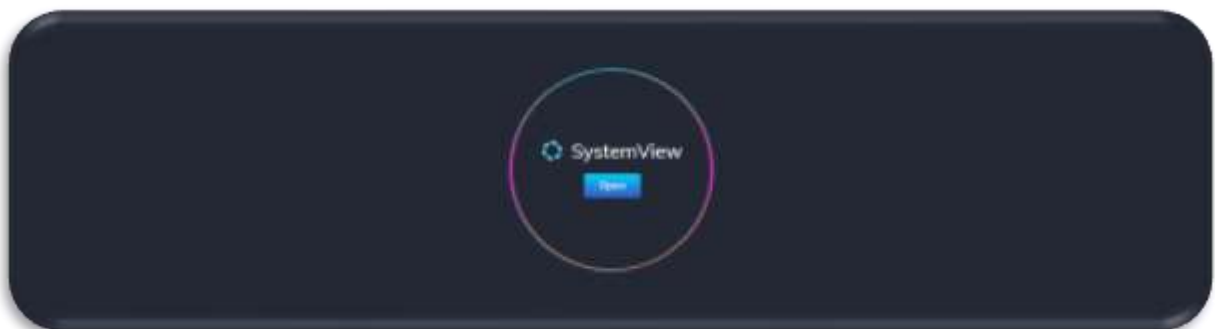
The data within this component updates every 5 – 10 minutes.

Definitions used in live inpatient view.

Title	Definition
IP	Inpatient

Step 1.

Sign in to SystemView using your current hospital credentials and password.



Step 2.



Navigate to Explore > Medical Imaging > Patient List > Live Inpatient View

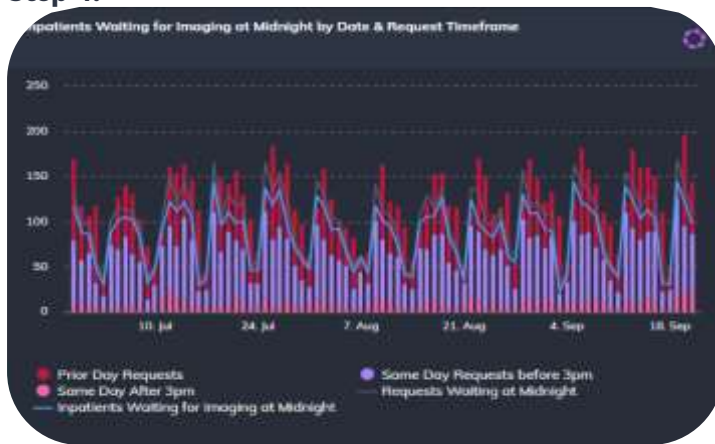
Step 3.



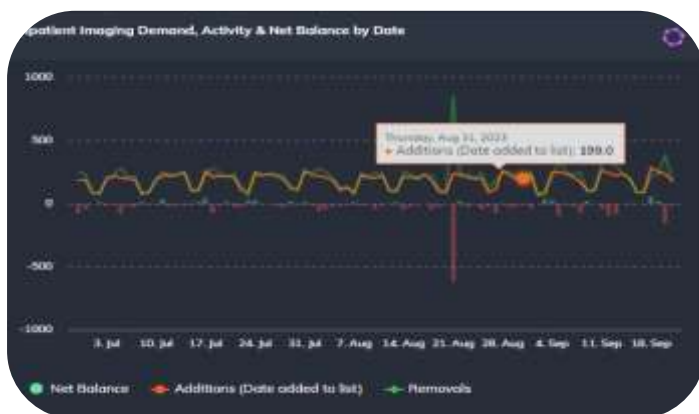
Apply drop-down filters **at the top of the page to refine the data.**

Current Patient List Details – select the button located alongside the filters at the top of the component. Patient details includes an exportable table of elective surgery patients that updates daily and once activated, can be saved and referenced in **Interact - MyLists**.

Step 4.



Inpatients Waiting for Imaging at Midnight by Date & Request Timeframe Displays a weekly trend of the number of requests made by time (prior day, same day before 3 pm, same day after 3 pm) and the number of request or inpatients waiting at midnight.



Inpatient Imaging Demand, Activity & Net Balance by Date Displays a weekly trend of the additions and removals for the selected filters with a timeframe that shows the **last 18 months**.

An **Addition** is determined by the date added to the waiting list for Requests that are not cancelled. (Cancelled requests are eliminated from the addition numbers).

A **Removal** is if a request is cancelled (for any reason) or if the exam is completed.
 Note: for the purposes of this Component, the report completion is not taken into account when calculating removals from the waiting list.

Net Balance is calculated by subtracting the Removals from the Additions. A Rolling 13 week average is added to assist in trend analysis.

Activate the chart with purple wheel, this will allow the end user to select **watch**. The chart will be stored under **MyView** in Interact.

Activate the chart with purple wheel, select net balance in the series, this will allow the end user to monitor according to values set and receive alerts via email. The chart will be stored under **MyView** in interact. The end user can mute the notifications under the bell symbol (right top corner).



Requests by Time Displays the number of requests hourly from midnight to midnight.

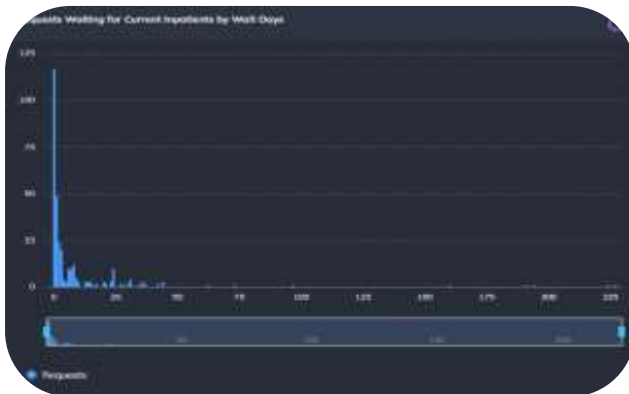
- Dotted Trend Line: Mean (average) requests for that hour by (Hour of day, Day of week and, is or is not winter)
- To accommodate the natural variance in requests by hour the logic applies one (1) standard deviation either side of the mean. Therefore, requests that fall within the red and green control limits are considered a normal hour. Hours above the upper limit are indicated in pink.
- Red Trend – Upper Control: One standard deviation above the mean average

- Green Trend – Lower Control: One standard deviation below the mean average

Key Metrics: Medical Imaging Live Inpatient View

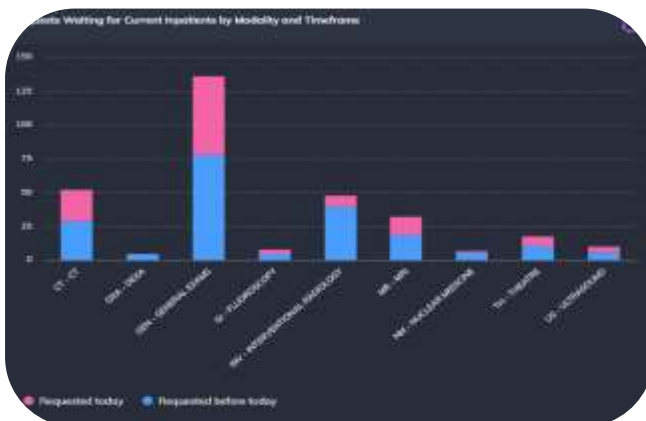
- 787 Current Inpatients
- 219 Current Inpatients with Requests (27.8%)
- 316 Total Requests
- 227 Longest Wait (0.62yr)

Key Metrics; Medical Imaging: Live Inpatient View provides an overview of the number of current inpatients, current inpatients with medical imaging request, the total number of requests and the longest wait.

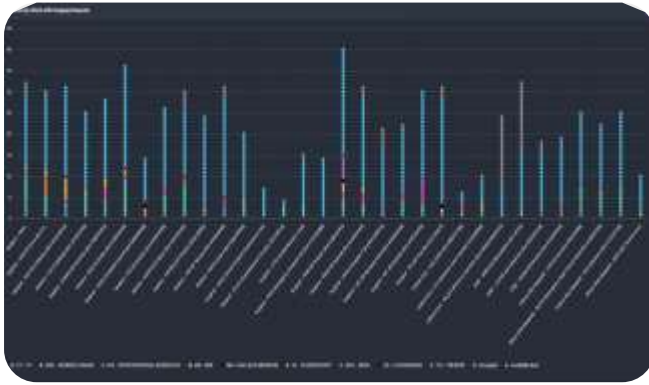


Requests Waiting for Current Inpatients by Wait Days Displays the number of days a request has been waiting.

The bar at the bottom of the chart allows the end user to change the display.



Requests Waiting for Current Inpatients by Modality and Timeframe Displays the current requests waiting yesterday and today for each of the modalities in hours.



Requests by Ward with Imaging Requests shows the hospital wards and the number of requests (bubble) for each request per modality. The modalities are colour coded.

Selecting a bubble will provide ‘Details of Requests Waiting for Current Inpatients’.



Hospital Group	Hospital	Request Type	Inpatient Episode ID	Current Ward Division	Current Ward Type	Current Ward Group	Current Ward	Current Bed	Requesting Hospital	Requesting Department	Requesting Clinician	Imaging

Details of Requests Waiting for Current Inpatient provides a list of current requests for the selected ward.